



# South East Wales Hang Gliding and Paragliding Club Ltd

**Document Title:** Rhigos Site Guide

**Reference Number:** SG0017

**Rev:**

1

Section	Release/Amendment Summary	Rev	Date
All	Initial issue	1	08/12/2016

<b>Created By:</b>	Charlie Fryer Committee Member	<b>Date &amp; Sign:</b>	
<b>Reviewed By:</b>	Chris Jones Avon Committee Member	<b>Date &amp; Sign:</b>	
<b>Approved By:</b>		<b>Date &amp; Sign:</b>	
<b>Management Representative:</b>		<b>Date &amp; Sign:</b>	



# South East Wales Hang Gliding and Paragliding Club Ltd

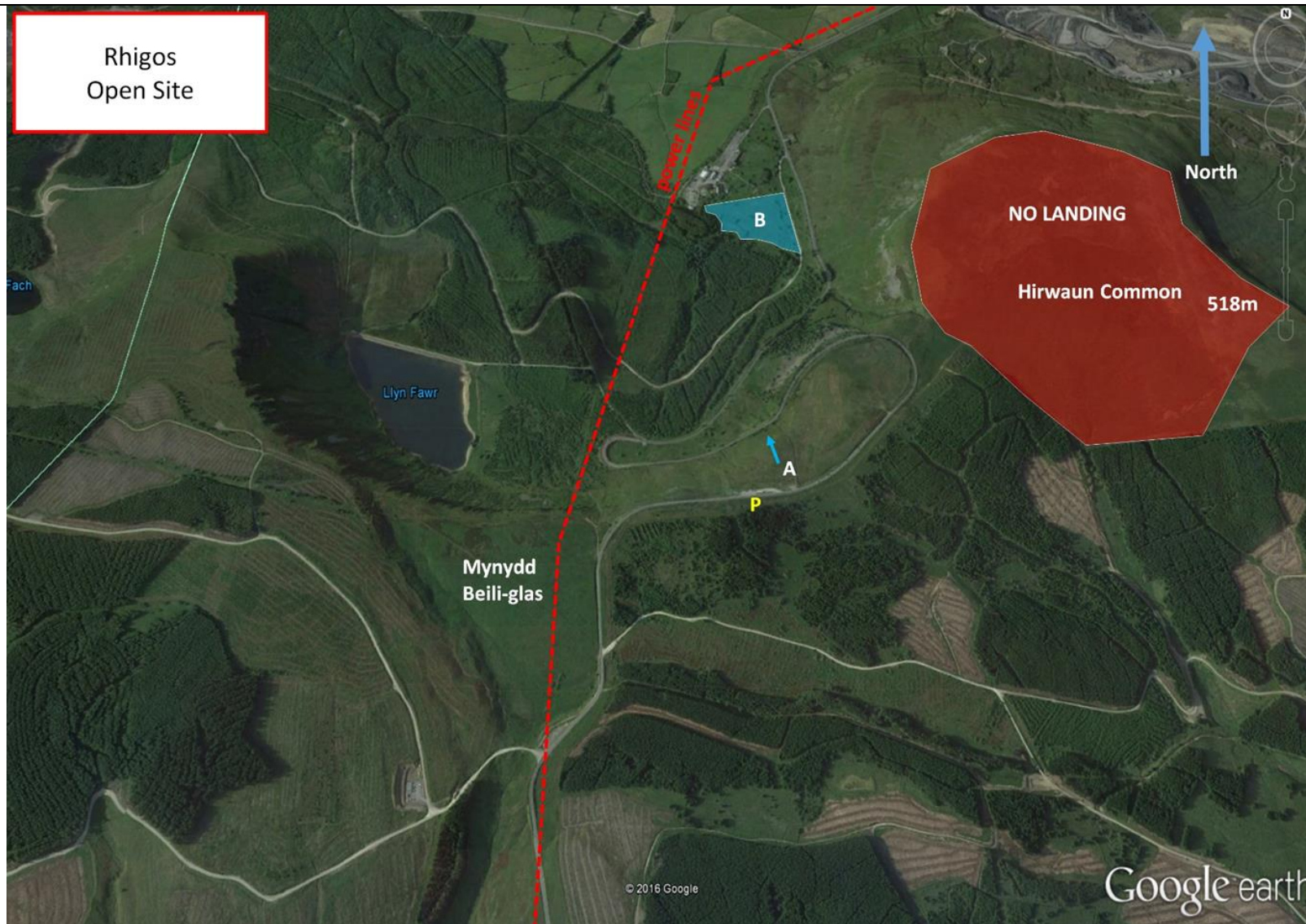
Document Title: Rhigos Site Guide


Reference Number: SG0017

Rev:

1

Site Image:



	<b>South East Wales Hang Gliding and Paragliding Club Ltd</b>		
	<b>Document Title:</b>	Rhigos Site Guide	
	<b>Reference Number:</b>	SG0017	<b>Rev:</b> 1

<b>Site Latitude:</b>	N51.717412	<b>Height ASL Meters:</b>	472m
<b>Site Longitude:</b>	W003.553552	<b>Height ASL Feet:</b>	1550ft
<b>Wind Direction:</b>	NW - NE	<b>Height Top to Bottom Meters:</b>	135m
<b>Best Direction:</b>	N	<b>Height Top to Bottom Feet:</b>	450ft
<b>Minimum BHPA Rating Hang Gliding:</b>	BHPA P rating	<b>Members Status:</b>	Open Site
<b>Minimum BHPA Rating Paragliding:</b>	BHPA P rating	<b>OS Grid Reference and Prefix:</b>	SN 928 032

<b>Parking 1</b>		<b>Parking 3</b>	
<b>Latitude:</b>	N51.716330	<b>Latitude:</b>	N/A
<b>Longitude:</b>	W003.554228	<b>Longitude:</b>	N/A
<b>Parking 2</b>		<b>Parking 4</b>	
<b>Latitude:</b>	N/A	<b>Latitude:</b>	N/A
<b>Longitude:</b>	N/A	<b>Longitude:</b>	N/A

<b>Road Access:</b>
From the A465 (Heads of the Valleys Road) take the A4061, signposted to Treherbert/Rhigos. Alternatively take the A4061 from Rhonda.

<b>Parking:</b>
Park in the viewpoint car park.



# South East Wales Hang Gliding and Paragliding Club Ltd

**Document Title:**

Rhigos Site Guide

**Reference Number:**

SG0017

**Rev:**

1

## Take-off:

Take-off is located in the field below the car park. Access to the field is by way of a gate 50mtrs to the east of the car park. No other areas should be used due to the hazards of the road, car park and vehicles.

## Landing:

Top landing is to the east of the steeper take off site. Do not land on Hirwaun Common NE of the car park/viewpoint as access has not been agreed.

Bottom landing is possible in the rough field adjacent to Tower Colliery. The grass is very long, the field is boggy and it has a raised dirt track going through the middle. A preflight inspection is advised.

## Top Landing General:

South East Wales sites often have very large, undefined take off and top landing areas, which may change position according to conditions. To avoid the potential for collision, pilots making a top landing should keep well away from gliders taking off, who may in some cases have limited visibility.

## Flying:

A very scenic site situated on a main road. Any flying usually attracts a crowd. A committed take off is required and care needed until sufficient ground clearance is gained.

## Hazards:

Rhigos is complex site to fly and land, hence the need to be minimum pilot rated. The take-off/ top landing field is extremely undulating and boggy underfoot, with long grass which can easily mask the terrain below this can hinder safe take-off and landing. Several large white/yellow posts and barbed wire fences surround the take-off. Be aware of these when launching. The whole area is populated with large trees and rocky/craggy outcrops, this can cause turbulence and a snag hazard if flown in close proximity. The main road can be extremely busy with cars and large HGVs. It is strongly advised that the road behind launch is not over flown. Do not attempt top landing in the car park. A power line to the left of take-off runs from the top of the hill to the forest below at approximately 45° to the hill, it is easily hidden and pilots should ensure they familiarise themselves with its location before taking off.



## South East Wales Hang Gliding and Paragliding Club Ltd

**Document Title:**

Rhigos Site Guide

**Reference Number:**

SG0017

**Rev:**

1

### Other Rules:

The fence to the take-off usually has a gate, this was not present at time of writing, however if present should be closed after access.

### Site Status:


Open site - This site may be flown by all suitably insured hang glider & paraglider pilots.

### Site Owners:

This site is flown with the kind permission of Mr Mervyn Morgan.

### Site XC Potential:

The area is undergoing extensive wind turbine installation; this may make XC to the Southerly areas dangerous.

	<b>South East Wales Hang Gliding and Paragliding Club Ltd</b>			
	<b>Document Title:</b>	Rhigos Site Guide		
	<b>Reference Number:</b>	SG0017	<b>Rev:</b>	1

#### Mapping / Imagery:

All rights belong to Google Inc. SEWHGPGC is a nonprofit making organisation.

#### General notes:

If you require further advice about a particular SEWHGPGC site please contact a Club Coach. Please report all accidents to The Club Safety & Training Officer Steve Millson and the BHPA. Please visit the BHPA for the most current Incident Report Form.

This document is a guide only.

**We advise that anyone Hang Gliding and Paragliding conduct a dynamic risk assessment prior to flying any site. This should be continuously re-assessed due to the changeable conditions of the outdoor environment.**

All individuals are advised to take the following into account when making their dynamic risk assessment:  
Paragliding and Hang Gliding are dangerous sports that can cause serious injury including bodily harm, paralysis and death. Flying SEW sites is undertaken with the full knowledge that Paragliding and Hang Gliding involves such risks. As the pilot you take exclusive responsibility for all risks associated with your part taking in the sport.

Any liability claims towards the club are excluded.

If you are not sure. **DO NOT FLY.**

#### Who to Call in an Emergency in the UK:

In the Mountains/Rivers/Lakes  
Dial 999/112 and ask for the Police and then Mountain Rescue.

If you are away from the road side then dial 999/112 and ask for the Police and then Mountain Rescue explaining your circumstances.

If you cannot make voice calls, you can now contact the 999 Emergency Services by SMS. NB you must register this prior to an emergency.

#### In an emergency 999 need to know:

##### Who is Calling?

Your name and mobile number.

##### What?

Briefly, what is the problem, including the state of the casualty. Ensure you use the buzzword **Fall From Height** and **Remote Location**.

#### Where? (see page 3 for location details) Description below:

Rhigos mountain pass on the S bend of the A4061 located 4.5km SW of Hirwaun on the A465.



## South East Wales Hang Gliding and Paragliding Club Ltd

**Document Title:**

Rhigos Site Guide

**Reference Number:**

SG0017

**Rev:**

1

**XC Potential Continued:**

N/A